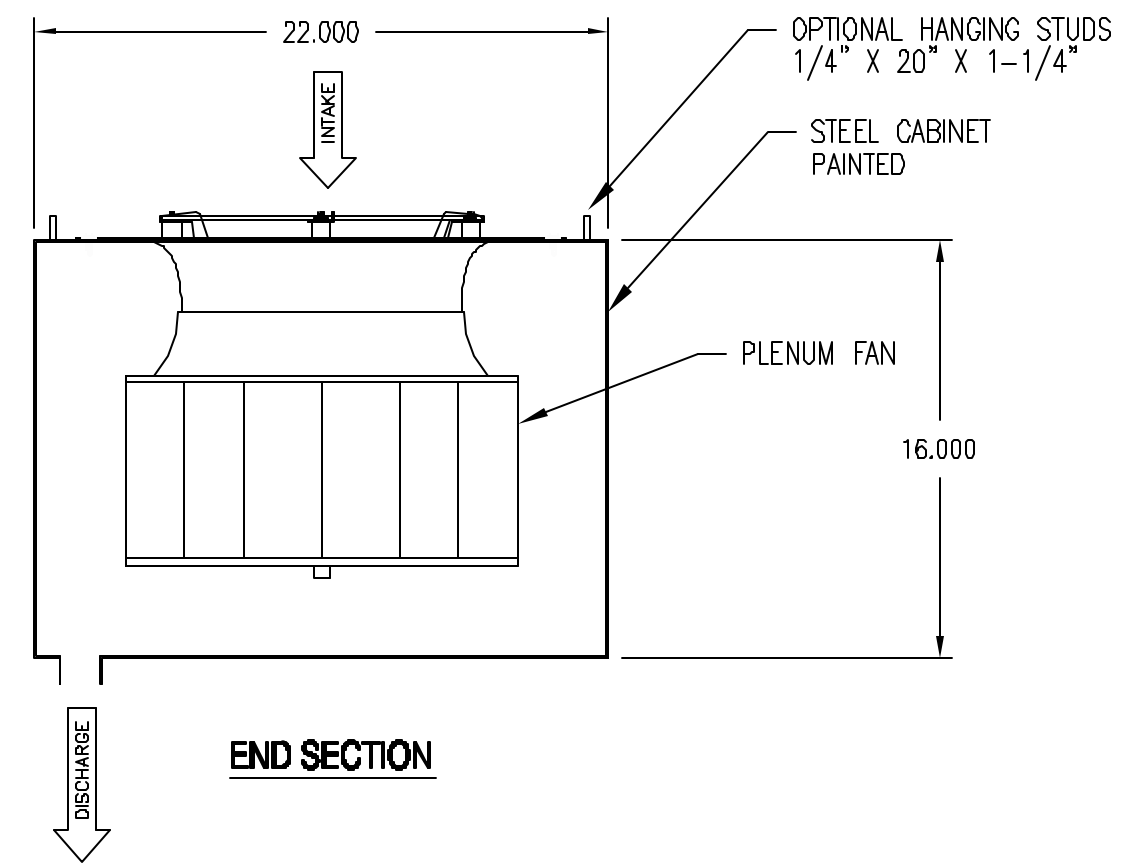
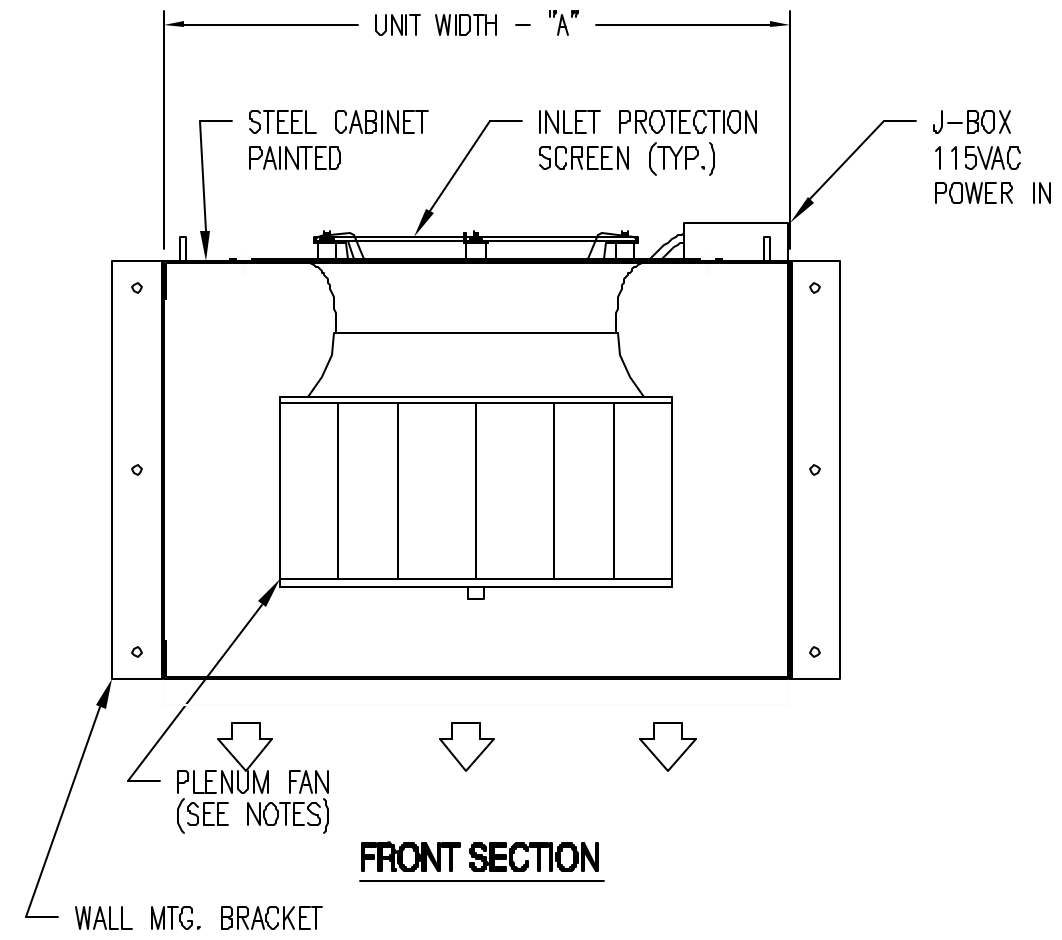


REV	DESCRIPTION	DATE	BY
A	INITIAL RELEASE		
B	SINGLE ACCS	6/8/04	JF



MODEL	UNIT WIDTH "A"	QTY FANS	CFM TOTAL	DISC. VEL. (FPM)	MOTOR(S)				REMARKS
					#	HP	V	AMPS/EA	
ACCS-1 40 NH	3'-4"	1	1200	2200	1	0.25	110	5	NO HEAT
ACCS-1 46 NH	3'-10"	1	1200	2200	1	0.25	110	5	NO HEAT
ACCS-1 48 NH	4'-4"	1	1200	2200	1	0.25	110	5	NO HEAT
ACCS-2 40 NH	3'-4"	1	2000	3600	1	0.33	110	7	NO HEAT
ACCS-2 46 NH	3'-10"	1	2000	3600	1	0.33	110	7	NO HEAT
ACCS-2 48 NH	4'-4"	1	2000	3600	1	0.33	110	7	NO HEAT

DAW TECHNOLOGIES, INC.
Contract Manufacturing Division
2700 South 900 West Salt Lake City, Utah 84119-2418

VENUS HIGH VELOCITY
COMMERCIAL AIR CURTAIN MODEL ACCS

DRAWN BY TW	DATE 2/24/04	SCALE N.T.S.	DRAWING NO. ACCS - SGL	REV. B
----------------	-----------------	-----------------	---------------------------	-----------

THIS DRAWING, AND THE INFORMATION SHOWN HEREON, IS THE SOLE PRODUCT OF DAW TECHNOLOGIES INC. NO REPRODUCTION IS AUTHORIZED WITHOUT THE EXPRESS WRITTEN PERMISSION FROM DAW TECHNOLOGIES INC. - PATENTS PENDING